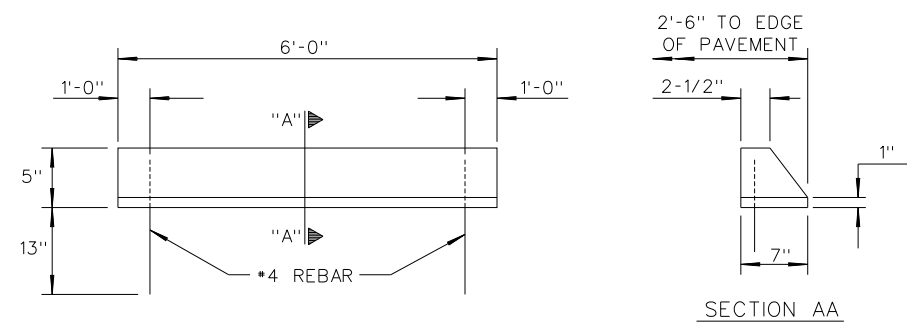
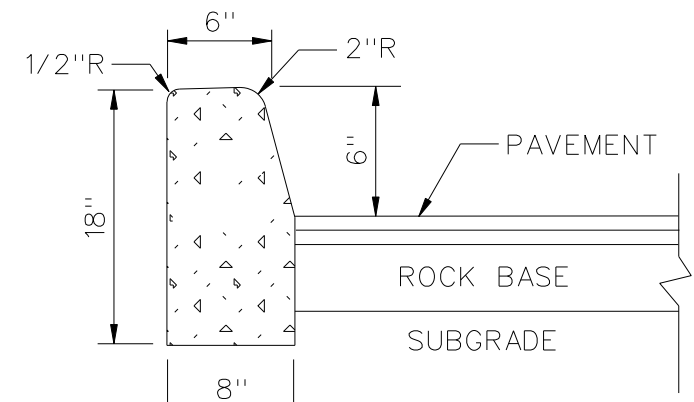


SECTION "A-A"
N.T.S.

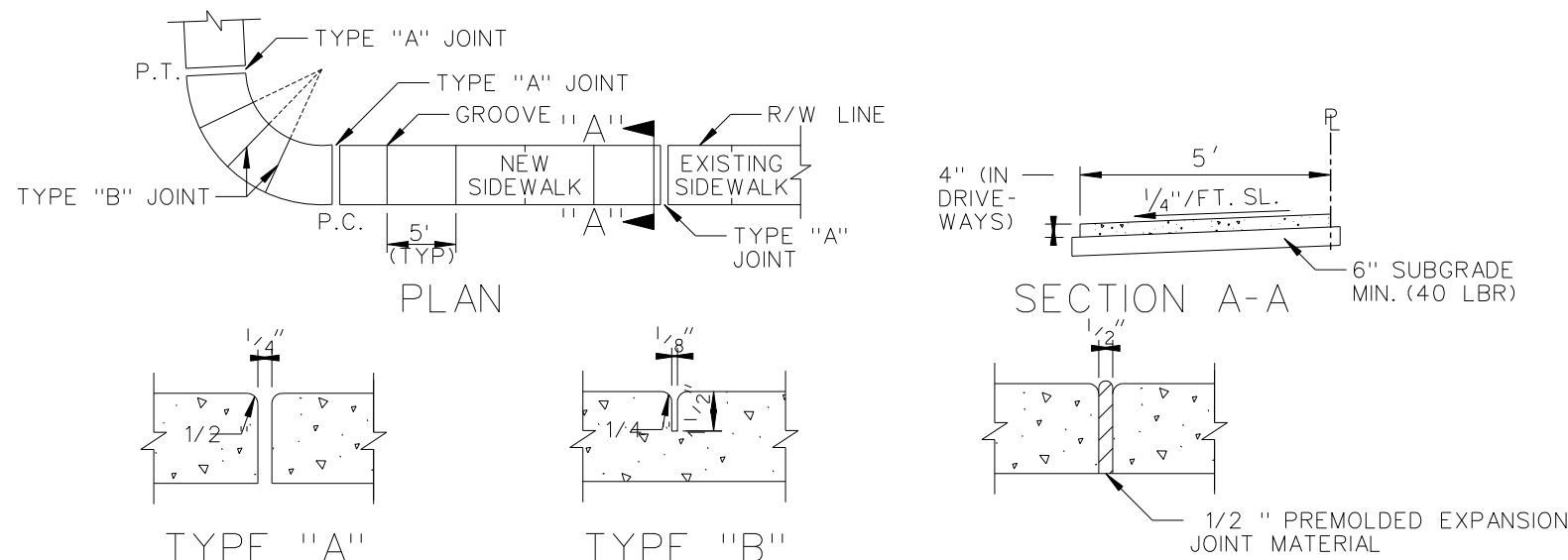


CONCRETE WHEEL STOP DETAIL



TYPE "D" CURB

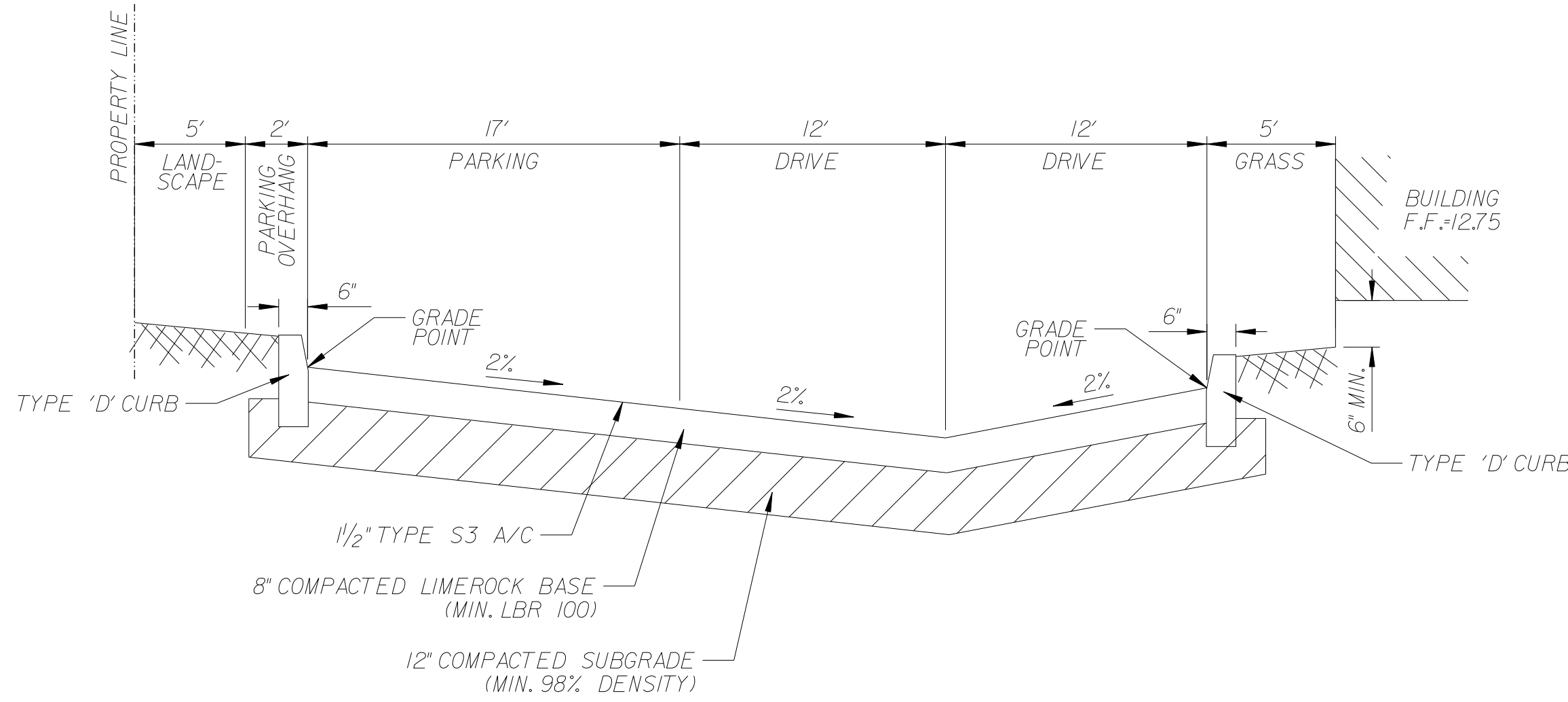
NOTE: PLACES WHERE TYPE 'D' CURB ARE UTILIZED IN LIEU OF WHEELSTOPS THE STANDARD VERTICAL HEIGHT OF 6" SHALL BE MODIFIED TO 5"



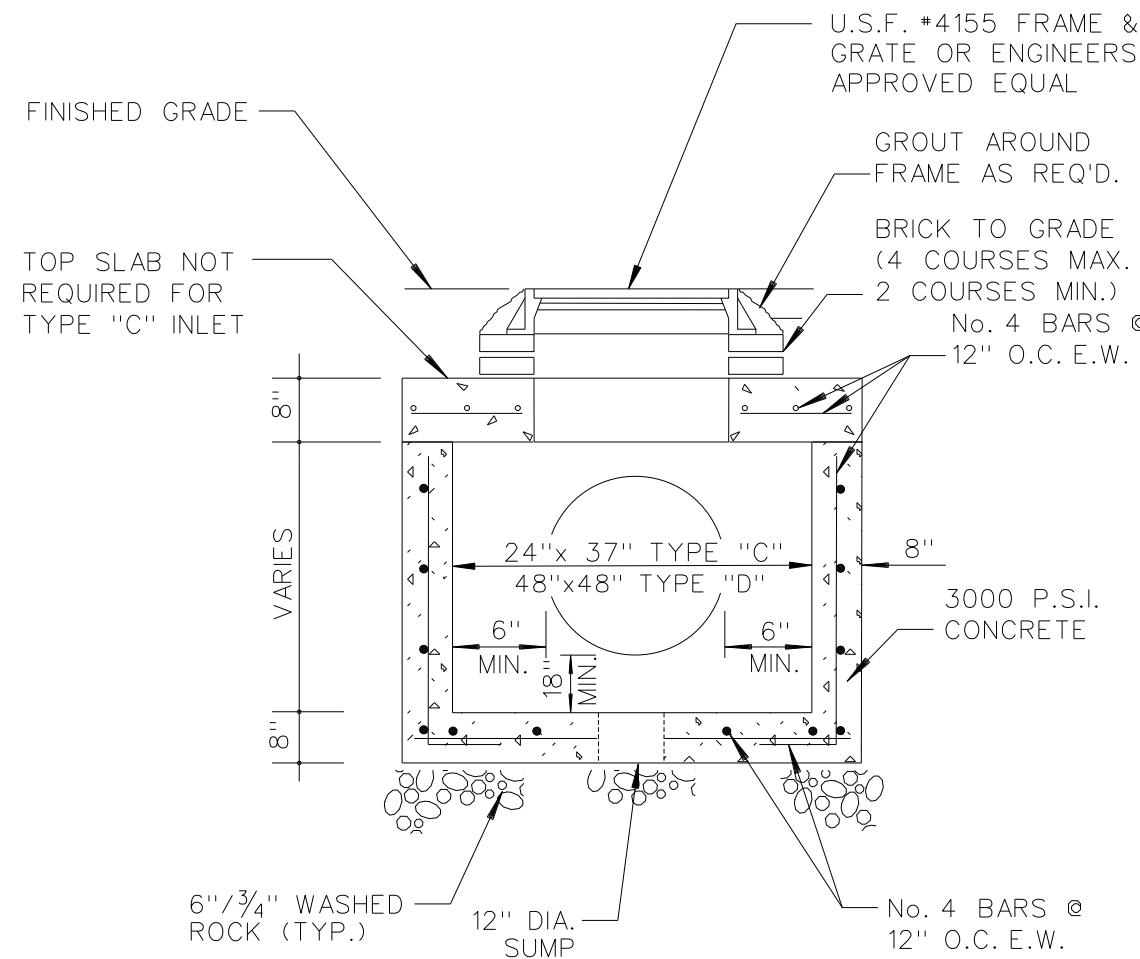
TYPE "A" (OPEN TYPE JOINTS) (SAWED JOINTS)
TYPE "B" (EXPANSION JOINTS)
TYPE "C" (EXPANSION JOINTS)

- NOTES
- ALL CONCRETE SHALL BE 3000 PSI, 4" THICK 6" THICK (MIN.) AT DRIVEWAYS ONLY.
 - TYPE "A" JOINT TO BE USED AT P.C. AND P.T. OF CURVES AND JUNCTION OF EXISTING AND NEW SIDEWALK
 - TYPE "B" JOINT TO BE USED AT 5'-0" CENTER TO CENTER ON SIDEWALKS.
 - TYPE "C" JOINT TO BE USED WHERE SIDEWALK ABUTS CONCRETE CURBS, DRIVEWAYS, AND SIMILAR STRUCTURES.
 - SIDEWALK SLOPES SHALL CONFORM TO THE REQUIREMENTS OF THE AMERICAN DISABILITIES ACT (A.D.A.).
 - SIDEWALK SHALL BE CONSTRUCTED TO MEET THE ELEVATION OF THE ULTIMATE SECTION.
 - ALL MUCK AND / OR UNSUITABLE MATERIAL MUST BE REMOVED IN ITS ENTIRETY TO 3 FEET BEYOND LIMITS OF SIDEWALK AND REPLACE WITH CLEAN FILL.

CONCRETE SIDEWALK DETAIL

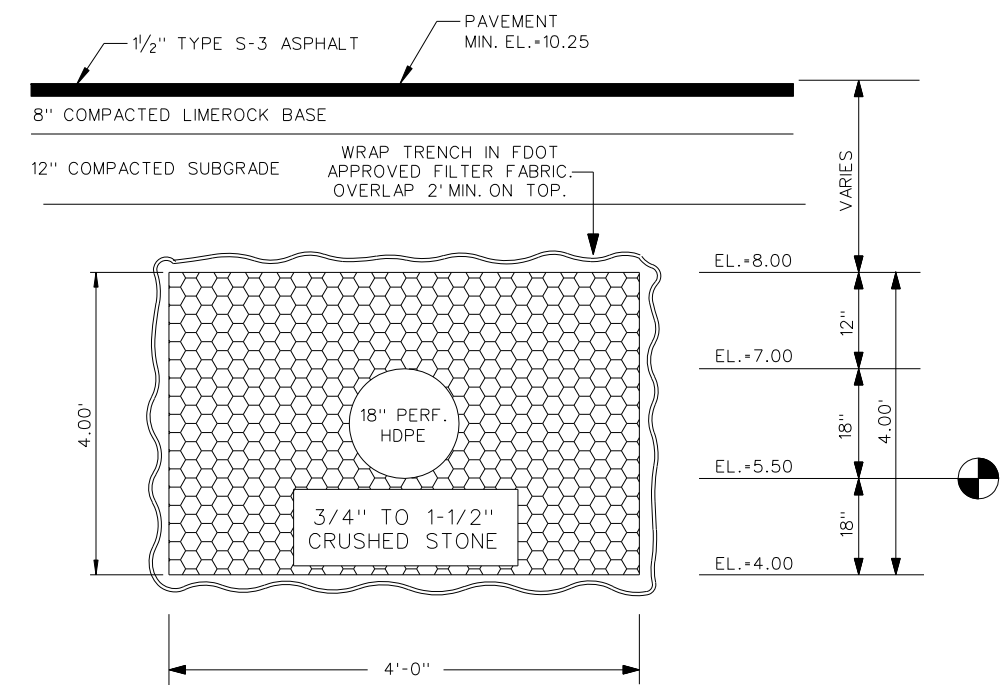
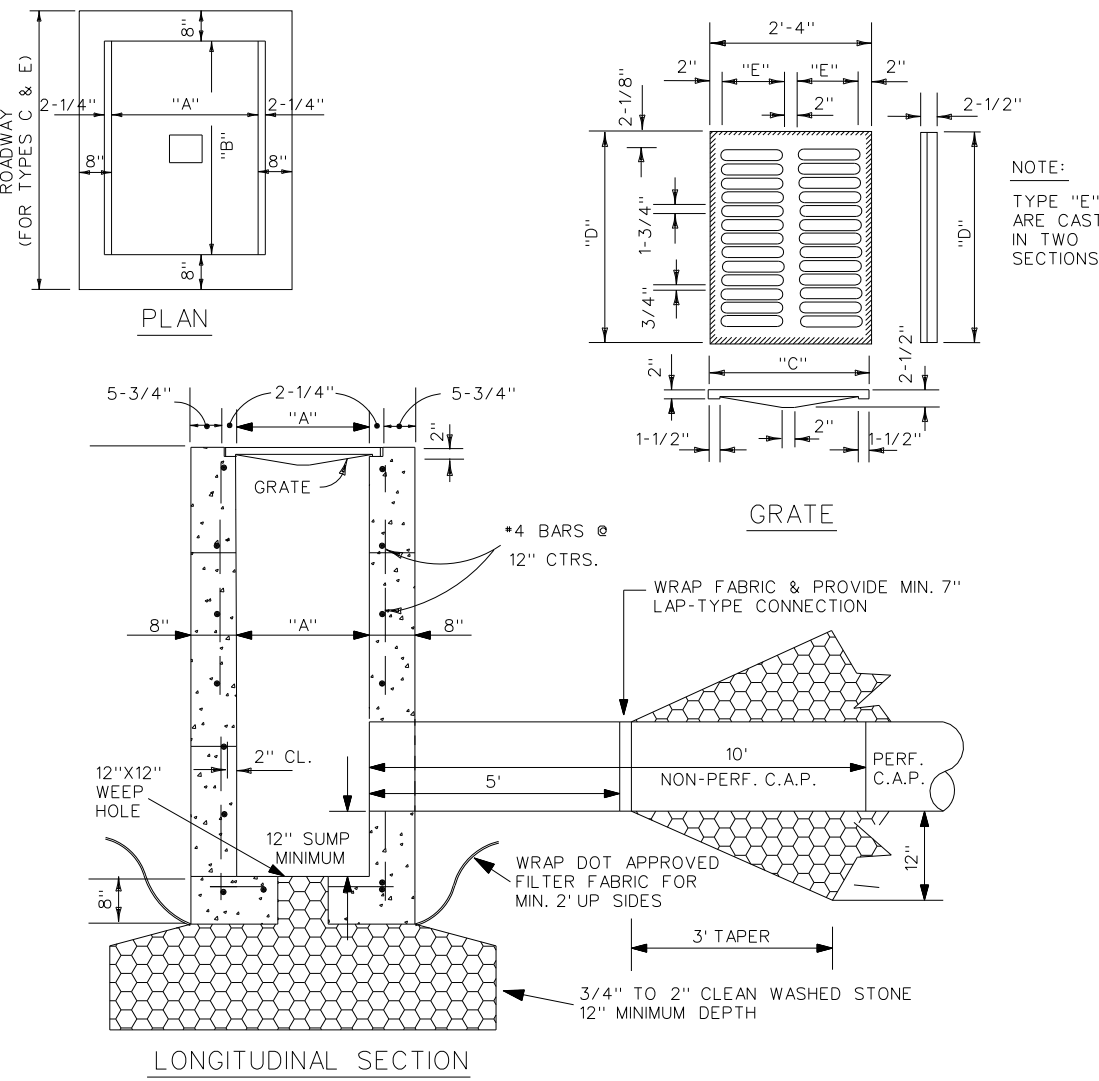


SECTION "B-B"
N.T.S.



PRECAST INLET DETAIL

TYPE INLET	DIMENSIONS						MAX. DIA. PIPE
	"A"	"B"	"C"	"D"	"E"	"A"	"B"
"C"	2'-0"	3'-1"	2'-4"	3'-0"	11"	18"	30"
"D"	3'-0"	4'-6"	3'-4"	4'-4"	1'-5"	30"	48"



TRENCH CROSS SECTION

INLET NOTES

BEVELED EDGES: ALL EXPOSED CORNERS AND EDGES TO BE CHAMFERED 3/4".
FOUNDATION MATERIAL WHERE MATERIAL UNSATISFACTORY FOR FOUNDATION IS ENCOUNTERED, ALL SUCH MATERIAL MUST BE REMOVED DOWN TO SATISFACTORY MATERIAL AND BACKFILLED TO SUBGRADE WITH CLEAN SAND.
GRATES: CAST IRON IN ACCORDANCE WITH F.D.O.T. SPECIFICATIONS.
INLET TYPES: INLETS ARE TO BE CONSTRUCTED TO THE DIMENSIONS SHOWN HEREON. TYPE "E MOD." IS A TYPE "E" TURNED 90° TO RECEIVE R.C.P. UP TO 48" DIAMETER. INLETS RECEIVING PIPE LARGER THAN 48" DIAMETER SHALL BE IN ACCORDANCE WITH F.D.O.T. STANDARDS. SEE F.D.O.T. STANDARD INCHES 200, 201 & 232.
MATERIAL INLET WALLS AND BASES MAY BE EITHER CAST-IN-PLACE CLASS I, 2500 P.S.I. CONCRETE OR PRECAST CLASS II, 4000 P.S.I. CONCRETE.
POLLUTION CONTROL DEVICES: "SPECIAL" INLETS SHALL HAVE POLLUTION CONTROL DEVICE INSTALLED, CONSISTING OF HALF-ROUND GALVANIZED STEEL PLATE, OPEN AT THE BOTTOM, WELDED CLOSED AT TOP (OPTIONAL).
LOCKDOWN PROVIDE EYEBOLT PER F.D.O.T. STANDARD INDEX 201.

BACKFILL NOTES

COMPACT TRENCH BACKFILL AND SOIL WITHIN MIN. 5' OF TRENCH TO MIN. 95% OF MAX. DRY DENSITY PER ASTM D-1557.

EXFILTRATION TRENCH

REVISIONS:

1.
2.
3.
4.
5.
6.
7.
8.

CLIENT:

PROJECT: **Addition to Beile Center**
HOLLYWOOD
FLORIDA

TASK: **CONSTRUCTION DETAILS**

GGB Engineering, Inc.
CIVIL AND FORENSIC ENGINEERS • LAND PLANNERS
• CONSTRUCTION MANAGERS
FLORIDA REGISTRATION No. 818
2699 Stirling Road, Suite C-202
Fort Lauderdale, Florida 33312
Phone: (954) 986-9899
Fax: (954) 986-8655

DATE: July 2011
SCALE: 1"=30'

DESIGNED BY: G.C.B.
DRAWN BY: F.M.

PROJECT NO. 11-0715

SHEET 2 OF 2

GARY G. BLOOM, P.E.
FLA. LIC. No. 19832
NOT VALID UNLESS SIGNED
AND SEALED BY ENGINEER